

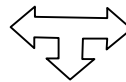
## General Rules and Guidelines

- Always follow the road/arterial that you are on, unless instructed to make a turn. This includes proceeding straight through **Signal Lights** and **Stop Signs** and across **Arterials**. **When in doubt, go straight ahead.**

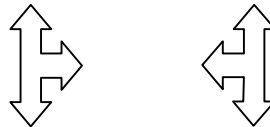
- Street names are generally NOT used in these instructions, but there are exceptions.

- "Power Lines" refer to high-tension wires on steel towers.

- A "**T**" intersection is an intersection that turns left and right, but does not go straight.



- A "**sideways T**" intersection is an intersection that goes straight and turns either left or right, but not both.



- When the term "**Left/Right turn lane**" is used, look for a dedicated turn lane.

- Emergency Signal Lights or Flashers do not count when counting Signal Lights.

- A "**Confirmation**" is something you will see after a turn to give you a warm and fuzzy feeling that you are on course. A "**Delayed Confirmation**" is a Confirmation that does not happen immediately after a turn (it's a ways down the road, so to speak). An "**Off Course**" is something to let you know that you blew it.

There are two ways to use the mileages given in the instructions.

- 1) The left hand column is the cumulative miles from the previous checkpoint. You can choose to reset your odometer at the checkpoint and keep track of the cumulative miles.
- 2) You can reset your odometer at each turn and use the **x.x miles to the next turn** prompt to keep track of the mileage.

Method #2 probably works better, because this almost eliminates the cumulative errors of most motorcycle odometers as you stretch the miles out.

- There has been roadwork started in some areas, totally beyond our control, so ride aware.

**Enjoy the ride!**

2005 GWRRA WA Chapter "A" Mystery Ride Instructions  
**Checkpoint 1 to Checkpoint 2**

Cumulative Miles From RMC	Instructions	
Stop Sign	<b>Checkpoint #1...Reset your Odometer to ZERO at the Stop Sign when leaving RMC.</b>	
0.0	#1	From the <b>RMC</b> parking Lot, turn <b>RIGHT</b> (head south) onto <b>E Valley Highway</b> and get into the left lane <b>ASAP</b> . <span style="float: right;">0.4 miles to the next turn.</span>
0.4	#2	Just before the <b>76 Station</b> on the left facing corner and at the <b>Signal Light</b> , turn <b>LEFT</b> , cross over the freeway (HWY-167) and straight up the hill. <b>Start counting signal lights AFTER crossing over the freeway</b> (at the <b>Valley Medical</b> sign). About 4 miles up the road, make sure that you are in the left lane, because the right lane becomes a turn only lane. <span style="float: right;">7.3 miles to the next turn.</span>
7.7	#3	At the 14 <sup>th</sup> <b>Signal Light</b> , after the previous turn instruction, and just after the <b>Pony Tail Ranch</b> sign on the right, turn <b>RIGHT</b> . ( <i>Confirmation: huge pipes on the left. Off Course: huge pipes on the right</i> ) <span style="float: right;">2.6 miles to the next turn.</span>
10.3	#4	Pass the <b>Presbyterian Church</b> on the right and turn <b>RIGHT</b> at the "T" intersection and <b>Stop Sign</b> . <span style="float: right;">0.3 miles to the next turn.</span>
10.6	...Dangerous intersection – traffic does not stop from the left or right...	
	#5	At the next "T" intersection and <b>Stop Sign</b> , turn <b>LEFT</b> and get into the right lane ASAP. <span style="float: right;">0.3 miles to the next turn.</span>
10.9	#6	At the 3 <sup>rd</sup> <b>Signal Light</b> after the previous turn instruction, turn <b>RIGHT</b> onto the arterial. ( <i>Confirmation: McDonalds on the right</i> ). <span style="float: right;">0.2 miles to the next turn.</span>
11.1	#7	Just before the <b>7-11</b> sign, turn <b>RIGHT</b> . ( <i>Confirmation: 7-11 on the left. Off course: Chevron Station on the right</i> ). <span style="float: right;">3.0 miles to the next turn.</span>
14.1	...Dangerous intersection – traffic does not stop from the left or right...	
	#8	Remember to pass through intersections that you are not instructed to turn on. Pass the <b>Water Gardens Trailer Park</b> on the right and turn <b>LEFT</b> at the "T" intersection and <b>Stop Sign</b> . ( <i>Confirmation: Long, light colored solid fence on the right</i> ). <span style="float: right;">1.0 miles to the next turn.</span>
15.1	#9	With the <b>Lake Sawyer Center</b> and the <b>Lake Sawyer Grocery</b> on the left and at the "sideways T" Intersection and <b>Yield Sign</b> , turn <b>RIGHT</b> . ( <i>Confirmation: Pass under the power lines</i> ). <span style="float: right;">2.3 miles to the next turn.</span>

2005 GWRRA WA Chapter "A" Mystery Ride Instructions  
**Checkpoint 1 to Checkpoint 2**

17.4	#10	Just after descending down a short and twisty hill with <b>Winterwood Estates</b> on the right, turn <b>LEFT</b> at the first opportunity. ( <b>Confirmation:</b> <i>Old Dilapidated Farm on the left (Mink Farm)</i> )	2.3 miles to the next turn.
19.7	#11	After crossing an arterial/highway at a <b>Stop Sign</b> , at the "T" intersection and <b>Stop Sign</b> , turn <b>RIGHT</b> . ( <b>Confirmation:</b> <i>cross over a short bridge. Further confirmation: pass by a fish hatchery on the right about 4.0 miles from the last turn.</i> )	4.7 miles to the next turn.
24.4	#12	Pass through the <b>Signal Light</b> (after the fish hatchery) and then cross the Bridge over a river and turn sharply <b>LEFT</b> at the complex intersection. ( <b>Confirmation:</b> <i>Green Valley Meats and Mosby Brothers Farm signs on the right. Off course: You DROVE under a Hiway overpass (WA 18).</i> )	8.0 miles to the next turn.
(31.8)	<b>Mystery Question #1:</b> Do all bridges go over something? Circle one: YES or NO		
32.4	...Beware – the next turn can sneak up on you!...		
	#13	After spotting the above bridge about a half mile back and just past a gravel parking area on the right, turn <b>RIGHT</b> into the <b>Park</b> at the "...Park..." sign. ( <b>Confirmation:</b> <i>Cross over a suspension bridge. Off course: Head up a hill with a 15 MPH sign and red &amp; white striped barricade.</i> )	0.6 miles to the next turn.
33.0	...Do not pay for any parking fees (say "Just passing through" to the Guard)...		
	#14	Ride past the "Guard House" and turn <b>RIGHT</b> at the <b>Stop Sign</b> . Continue to ride to the end of the road and use the large "U" turn to return to the checkpoint. Please park off of the roadway.	0.7 miles to the checkpoint.
33.7	<b>Checkpoint #2...Reset your Odometer to ZERO at this Checkpoint.</b>		
	1.3 miles to the next turn.		

2005 GWRRA WA Chapter "A" Mystery Ride Instructions  
**Checkpoint 2 to Checkpoint 3**

Cumulative Miles From CP2	Instructions
0.0	<p style="text-align: center;"><b>...Checkpoint 2...Verify that your Odometer is set to ZERO at this Checkpoint ...</b></p> <p style="text-align: right;">1.3 miles to the next turn</p>
1.3	<p>#15 Reverse your route, pass the "Guard House" and pass over the bridge. Turn <b>RIGHT</b> at the "T" intersection. <i>(Confirmation: Head up a twisty hill with a 15MPH sign and red &amp; white striped barricade. Delayed Confirmation: On the right, a red barn with "This is Kummer, formerly school district 123..." written on it.)</i></p> <p style="text-align: right;">2.8 miles to the next turn</p>
4.1	<p style="text-align: center;">...Dangerous intersection – traffic does not stop from the left or right...</p> <p>#16 At the "T" intersection and <b>Stop Sign</b>, turn <b>LEFT</b> onto the highway. <i>(Confirmation: A ways down the road there is a lake on the left.)</i></p> <p style="text-align: right;">1.6 miles to the next turn</p>
5.7	<p>At the <b>Genex</b> station, turn <b>RIGHT</b>. <i>(Confirmation: Pass Los Cabos and the Black Diamond City Hall on the left. Delayed Confirmation: A ways down the route, proceed through the Signal Light and go single file across the bridge.)</i></p> <p style="text-align: right;">8.3 miles to the next turn</p>
14.0	<p style="text-align: center;">...Dangerous intersection – traffic does not stop from the left or right...</p> <p>#17 At the "T" intersection and <b>Stop Sign</b>, turn <b>LEFT</b> (South). <i>(Confirmation: You're on a highway/arterial. Delayed Confirmation: Thunder Mountain Middle School sign on the left.)</i></p> <p style="text-align: right;">3.2 miles to the next turn</p>
17.2	<p>#18 At the schoolyard and the "H" sign on the right, turn <b>LEFT</b> at an angle. <i>(Confirmation: Pass the Hospital on the right.)</i></p> <p style="text-align: right;">1.3 miles to the next turn</p>
18.5	<p>#19 At the next <b>Stop Sign</b> and <b>Ellenson Park</b> on the right, turn <b>RIGHT</b>. <i>(Confirmation: Blue playground equipment on the right.)</i></p> <p style="text-align: right;">0.5 miles to the next turn</p>
19.0	<p>#20 At the <b>Signal Light</b>, turn <b>LEFT</b> towards <b>Charlie's</b> and <b>King's</b>. <i>(Confirmation: Pass by the City Park and Golf Course signs on the right. Delayed Confirmation: Pass under an old wooden Trestle/bridge)</i></p> <p style="text-align: right;">4.1 miles to the next turn</p>
23.1	<p>#21 After passing under Power Lines, at the "sideways T" intersection and the "...Dam" sign, from the <b>dedicated right turn lane</b> turn <b>RIGHT</b>. <i>(Confirmation: Hard surfaced quasi-parking lot &amp; big tree on the left as you go around the corner. Off Course: General Store on right, then Chinook Pass! (you blew it).)</i></p> <p style="text-align: right;">1.9 miles to the next turn</p>

2005 GWRRA WA Chapter "A" Mystery Ride Instructions  
**Checkpoint 2 to Checkpoint 3**

25.0	#22 At the first right turn in an inverted "Y" intersection with a gate up ahead, go <b>RIGHT</b> to stay on course OR go <b>STRAIGHT</b> , through a gate, for a potty break, and then return to the course. ( <u>Confirmation: Twisty and technical road - irregular surface and tight turns!</u> <u>Off Course: You're in the park</u> )	2.3 miles to the next turn
27.3	#23 After a twisty road, there will be a straight stretch. Be sure to turn to the right at the end of the straight stretch (don't turn into the Dead End). Continue following the <b>arterial</b> and turn <b>LEFT</b> at the first intersection. ( <u>Confirmation: Several large log stacks on the left.</u> <u>Delayed Confirmation: Twisty Road.</u> <u>Delayed Confirmation: Long cedar colored solid fence on the right</u> )	1.7 miles to the next turn
29.0	#24 A ways past the silo with no dome on top on the right and the yellow and beige house on the right, turn <b>RIGHT</b> ( <u>Confirmation: Large pale yellowish/greenish barn on the right.</u> <u>Off course: Hill dead ahead.</u> )	1.8 miles to the next turn
30.8	#25 After making two square turns and passing over a culvert (very short bridge) marked by yellow and black striped marker signs, turn <b>LEFT</b> at the <b>all way Stop Sign</b> . ( <u>Confirmation: "Seattle Tacoma" sign on the right.</u> )	0.8 miles to the next turn
31.6	#26 At the <b>Signal Light</b> , turn <b>LEFT</b> onto a main highway. ( <u>Delayed Confirmation: Unique metal sculpture on the right.</u> <u>Delayed Confirmation: Cross over a river.</u> )	2.3 miles to the next turn
33.9	#27 At the <b>Signal Light</b> and <b>Wally's Drive In</b> on the left, turn <b>LEFT</b> . Immediately at the next intersection, turn <b>sharply RIGHT</b> ( <u>Confirmation: Blue Playground Equipment and a Logging Museum on the right.</u> )	2.3 miles to the next turn
36.2	#28 At the (possibly confusing) "Y" intersection, keep <b>RIGHT</b> ( <u>Confirmation: Cross a bridge.</u> <u>Off Course: You will end up in the town of Wilkeson.</u> )	2.4 miles to the next turn
38.6	#29 Just past the fire station on the left and just after the <b>76 Station</b> on the right, turn <b>LEFT</b> ( <u>Confirmation: Pass over a biking/hiking trail</u> )	0.1 miles to the next turn
38.7	#30 At the "T" intersection and <b>Stop Sign</b> , turn <b>RIGHT</b> ( <u>Confirmation: Large Willow Tree on the right</u> )	0.3 miles to the next turn
39.0	#31 At the next "T" intersection and <b>Stop Sign</b> (facing into a field), turn <b>LEFT</b> ( <u>Confirmation: Large metal lean-to/shelter on the left.</u> <u>Confirmation: You are now on a narrow and twisty country road</u> )	3.9 miles to the next turn

2005 GWRRA WA Chapter "A" Mystery Ride Instructions  
**Checkpoint 2 to Checkpoint 3**

42.9	<p>...Dangerous intersection – traffic does not stop from the left or right...</p> <p>#32 At the “<b>T</b>” intersection and <b>Stop Sign</b>, turn <b>LEFT</b> onto the highway. (<i><b>Delayed Confirmation: Pass under a green trestle</b></i>)</p> <p>...Did you see the Buffalo (Bison for you purists) Herd on the right??</p> <p>3.7 miles to the next turn</p>
46.6	<p>#33 After coming into town, with a park on the left, continue to follow the arterial by following the double yellow line. Continue all of the way through town. (<i><b>Confirmation: City Park on the left</b></i>)</p> <p>3.6 miles to the next turn</p>
50.2	<p>#34 After leaving town and passing by the housing developments and after crossing over a substantial cement bridge and at the second <b>Signal Light</b> (after the bridge) and “<b>sideways T</b>” intersection, turn <b>RIGHT</b>. (<i><b>Confirmation: Old style church building on the left. Delayed Confirmation: As you pass over a river, observe the Pipe Bridge on the right</b></i>)</p> <p>1.9 miles to the next turn</p>
52.1	<p>#35 At the “<b>Y</b>” intersection, bear <b>LEFT</b> (<i><b>Confirmation: Stop at the Stop Sign then go down the winding, twisty road</b></i>)</p> <p>1.0 miles to the next turn</p>
53.1	<p>#36 At the “<b>T</b>” intersection and <b>Stop Sign</b>, turn <b>RIGHT</b> (<i><b>Confirmation: Several medium sized faded red buildings on the right</b></i>)</p> <p>1.2 miles to the next turn</p>
54.3	<p>#37 Just after the <b>large</b> pale greenish/yellowish looking building on the right and seeing a white “institutional” looking building on the right, turn <b>RIGHT</b> (<i><b>Confirmation: Large white “institutional” looking building on the right</b></i>)</p> <p>0.2 miles to the next turn</p>
54.5	<p>#38 Immediately at the next intersection, turn <b>LEFT</b> following the arterial.</p> <p>0.7 miles to the next turn</p>
55.2	<p>#39 Turn <b>RIGHT</b> in to the <b>Shell Station</b> and ride around to the back.</p>
<p><b>Checkpoint #3...Reset your Odometer to ZERO at this Checkpoint.</b></p> <p>3.6 miles to the next turn</p>	

2005 GWRRA WA Chapter "A" Mystery Ride Instructions  
**Checkpoint 3 to Checkpoint 4**

Cumulative Miles From CP3	Instructions
0.0	<p style="text-align: center;"><b>Checkpoint #3...Reset your Odometer to ZERO at this Checkpoint.</b></p> <p style="text-align: right;">3.6 miles to the next turn.</p>
3.6	<p style="text-align: center;">...You may see other Goldwings crossing right to left at a Signal Light...</p> <p>#41. After leaving the <b>Shell Station</b>, pass under the highway. After crossing over a bridge on a lake and after passing under some power lines and at a <b>Signal Light</b> at a "<b>sideways T</b>" intersection, turn <b>RIGHT</b>. (<i>Confirmation: Lake off to the right and a school sign on the left</i>)</p> <p style="text-align: right;">1.0 miles to the next turn.</p>
4.6	<p>#42. Just before the grove of Evergreen trees and just before the <b>76 Station (easy to miss)</b>, turn <b>RIGHT</b>. (<i>Confirmation: 76 Station on the left</i>)</p> <p style="text-align: right;">3.7 miles to the next turn.</p>
8.3	<p>#43. After sweeping the turn to the left, go <b>STRAIGHT</b> thru the "<b>sideways T</b>" intersection. (<i>Delayed Confirmation: Silo on the left with a rusted "striped" top</i>)</p> <p style="text-align: right;">3.7 miles to the next turn.</p>
(10.4)	<p><b>Mystery Question #2:</b> As you come around a corner and sweep to the left, what beverage comes to mind?</p> <p>Your answer: _____</p>
12.0	<p>#44. At the <b>Stop Sign</b> and <b>Dead End</b> sign dead ahead, turn <b>RIGHT</b> onto the highway.</p> <p style="text-align: right;">0.8miles to the next turn.</p>
12.8	<p style="text-align: center;">...Tricky Turn...</p> <p>#45. At the first right turn, turn <b>RIGHT</b> using the <b>dedicated right turn lane</b>. (<i>Confirmation: Large house with airplanes in the yard on the left. Off Course: Large house with airplanes in the yard on the right</i>)</p> <p style="text-align: right;">0.6 miles to the next turn.</p>
13.4	<p>#46. At the <b>History Monument</b>, bear <b>LEFT</b> (<i>Confirmation: Red slatted utility fence on the right</i>)</p> <p style="text-align: right;">0.8 miles to the next turn.</p>
	<p><b>Mystery Question #3:</b> What is the shape of the Monument?</p> <p>Circle one: Square or Rectangle or Pyramid or Monolith or Round</p>
14.2	<p>#47. At the "<b>T</b>" intersection and <b>Stop Sign</b>, turn <b>LEFT</b>. (<i>Confirmation: Long solid brown colored fence on the right</i>)</p> <p style="text-align: right;">0.3 miles to the next turn.</p>
14.5	<p>#48. At the next "<b>sideways T</b>" intersection, turn <b>RIGHT</b> around the housing development. (<i>Confirmation: Housing development on the right</i>)</p> <p style="text-align: right;">1.0 miles to the next turn.</p>

2005 GWRRA WA Chapter "A" Mystery Ride Instructions  
**Checkpoint 3 to Checkpoint 4**

15.5	#49. After going around a <b>15 MPH left turn</b> and at the next " <b>sideways T</b> " intersection, turn <b>RIGHT</b> . ( <i>Confirmation: Red house on the left. Delayed Confirmation: The lake is on your immediate right and a playground on your left</i> ). 1.2 miles to the next turn.
16.7	#50. After passing by the lake and at the " <b>Y</b> " intersection, follow the arterial to the <b>LEFT</b> ( <i>Confirmation: Elementary school on the right</i> ) 2.7 miles to the next turn.
19.4	...Other Goldwings might be crossing left to right at the Signal Light... #51. Go straight through the <b>Signal Light</b> and at the upcoming " <b>T</b> " intersection, turn <b>RIGHT</b> . ( <i>Confirmation: A long straight stretch down a hill</i> ) 0.6 miles to the next turn.
20.0	...Dangerous intersection – traffic does not stop from the left or right... #52. At the " <b>T</b> " intersection and <b>Stop Sign</b> , turn <b>LEFT</b> . ( <i>Confirmation: A 20 MPH twisting road downhill</i> ) 0.8 miles to the next turn.
20.8	...Dangerous intersection – traffic does not stop from the left or right... #53. At the " <b>T</b> " intersection and <b>Stop Sign</b> , with heavy equipment and trucks straight ahead, turn <b>RIGHT</b> and <b>START COUNTING SIGNAL LIGHTS!</b> ( <i>Confirmation: Large white power building "White River built in 1911" on the right</i> ) 2.0 miles to the next turn.
22.8	...Warning – this will be a right turn then immediate left turn situation... #54. At the 3 <sup>rd</sup> <b>Signal Light</b> from the previous turn, and at the " <b>sideways T</b> " intersection, get in the <b>dedicated right turn lane</b> and turn <b>RIGHT</b> and head up the hill. Immediately get in the <b>dedicated left turn lane</b> and turn sharply <b>LEFT</b> . ( <i>Confirmation: Green playing field on the left. Off Course: You're going up the hill into a housing area</i> ) 1.5 miles to the next turn.
24.3	...Dangerous intersection – traffic does not stop from the left or right... #55. At the <b>Stop Sign</b> , with a cement plant up ahead through a gated driveway, from the <b>dedicated left turn lane</b> , turn sharply <b>LEFT</b> . Follow the arterial. ( <i>Confirmation: A Pond on the right and then cross over a river on a bridge</i> ) 1.7 miles to the next turn.
26.0	#56. With a <b>Walgreen's</b> ahead on the left, at a <b>Stop Sign</b> , turn <b>RIGHT</b> and <b>keep in the right lane</b> . ( <i>Confirmation: You're headed north!</i> ) 0.4 miles to the next turn.
26.4	#57. Pass the <b>Big Daddy's</b> and <b>Chevron</b> on the right and turn <b>RIGHT</b> into the <b>King County Library</b> parking lot and proceed around to the back of the Library. 0.1 miles to the Checkpoint.
26.5	<b>At the Brown Building: Checkpoint #4</b>

...We hope that you had a fun ride!!!!...